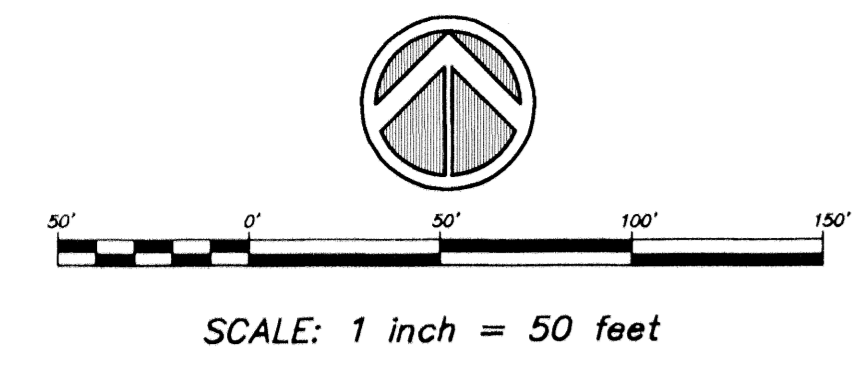


LIBERTY BAY

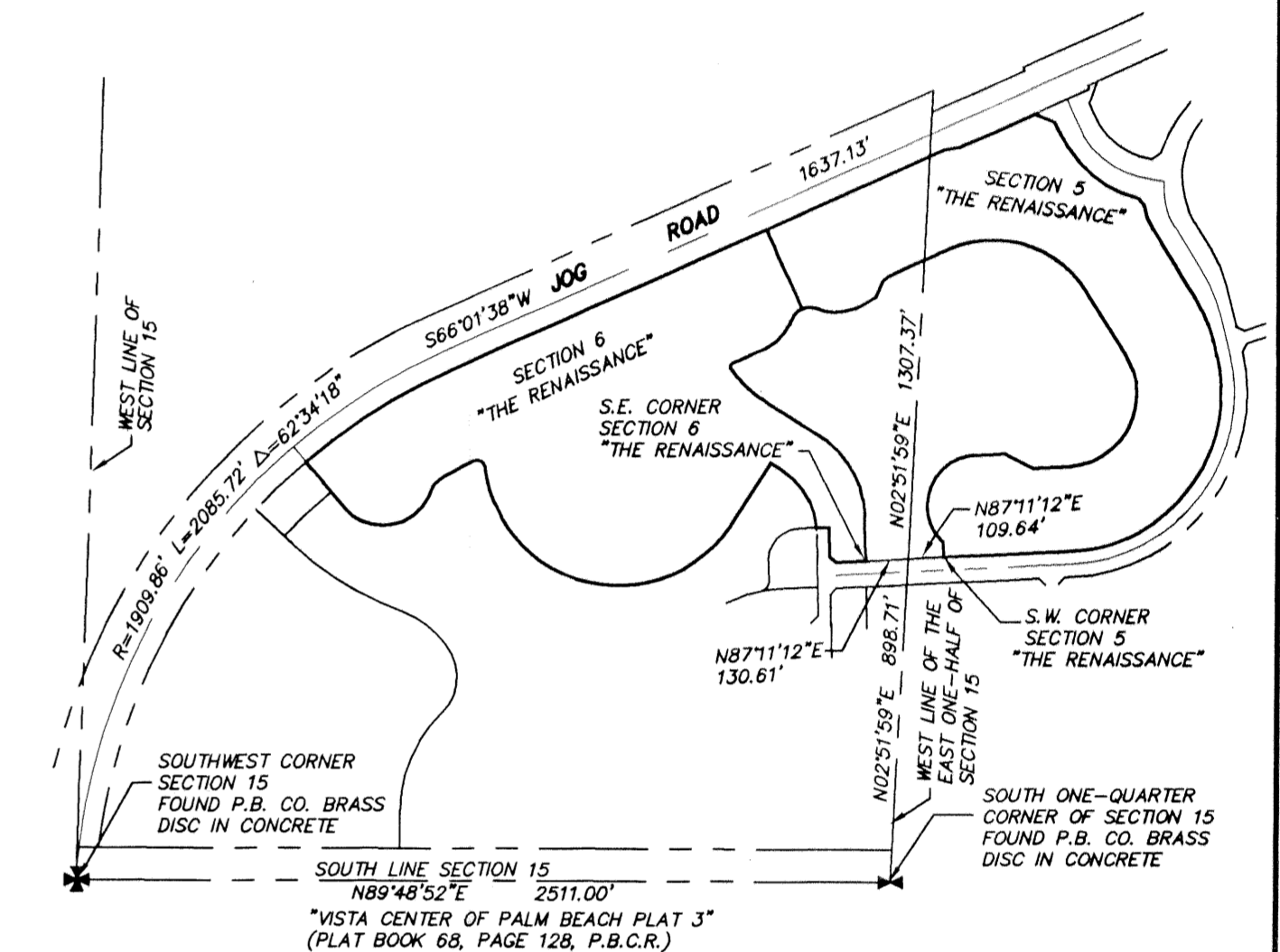
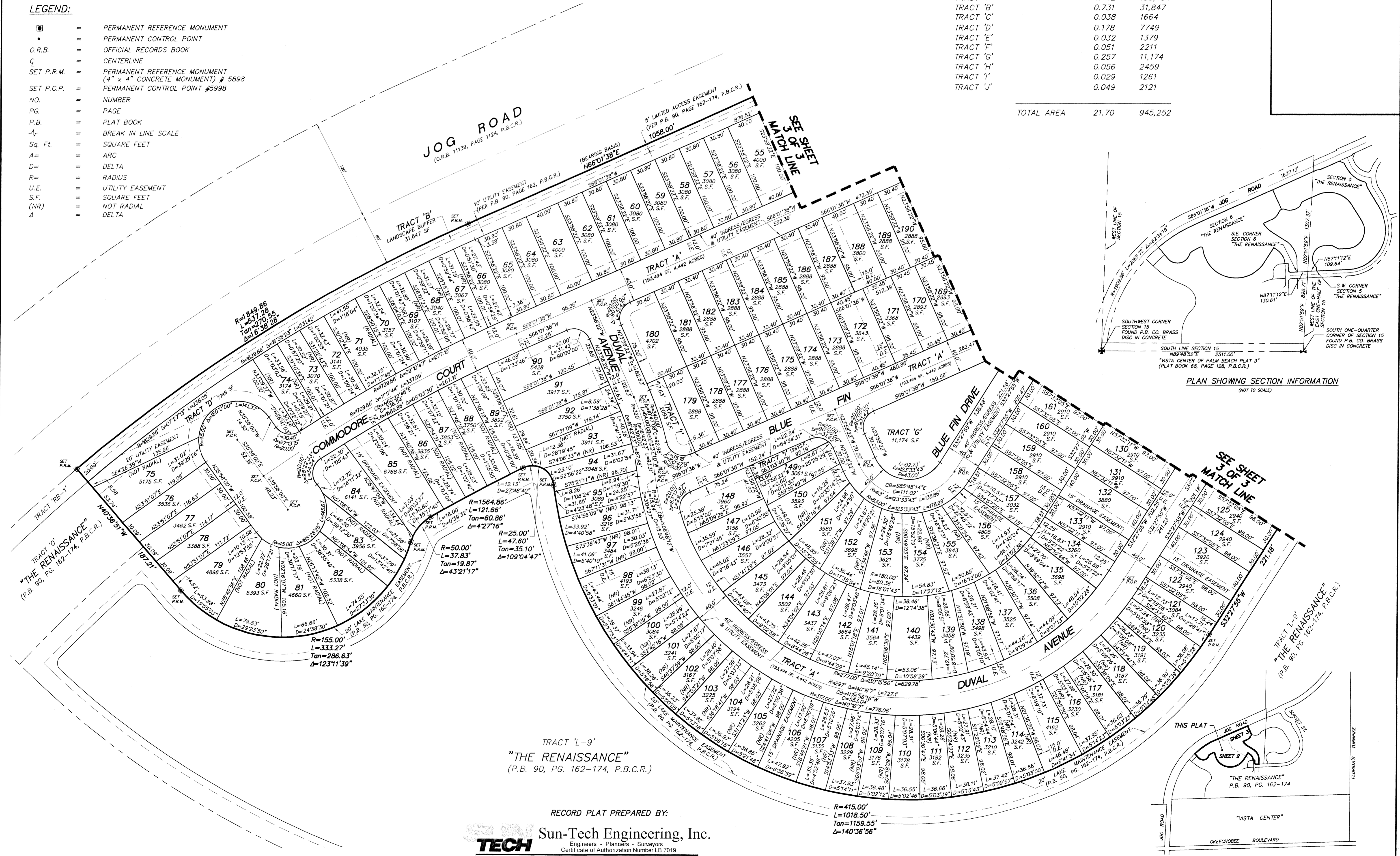
A REPLAT OF SECTION 6, "THE RENAISSANCE", ACCORDING TO PLAT BOOK 90, PAGES 162-174, PALM BEACH COUNTY RECORDS
LYING IN SECTION 15, TOWNSHIP 43 SOUTH, RANGE 42 EAST, CITY OF WEST PALM BEACH, PALM BEACH COUNTY, FLORIDA



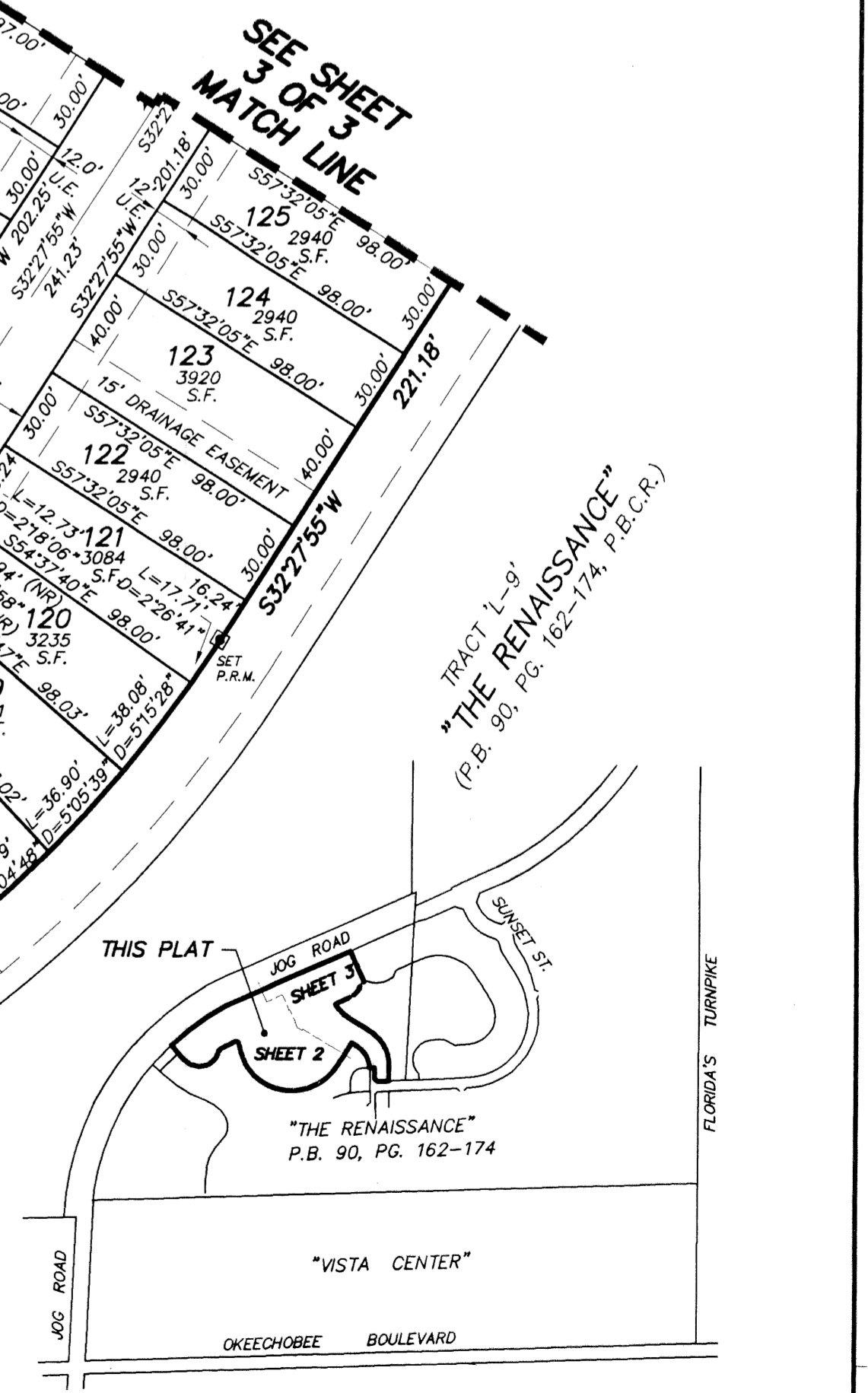
- LEGEND:**
- = PERMANENT REFERENCE MONUMENT
 - = PERMANENT CONTROL POINT
 - O.R.B. = OFFICIAL RECORDS BOOK
 - C = CENTERLINE
 - SET P.R.M. = PERMANENT REFERENCE MONUMENT (4" x 4" CONCRETE MONUMENT) # 5898
 - SET P.C.P. = PERMANENT CONTROL POINT #5998
 - NO. = NUMBER
 - P.G. = PAGE
 - P.B. = PLAT BOOK
 - = BREAK IN LINE SCALE
 - Sq. Ft. = SQUARE FEET
 - A = ARC
 - D = DELTA
 - R = RADIUS
 - U.E. = UTILITY EASEMENT
 - S.F. = SQUARE FEET
 - (NR) = NOT RADIAL
 - Δ = DELTA

AREA SUMMARY

	ACRES	SQUARE FEET
LOTS 1 TO 194 (INCLUSIVE)	15.837	689,893
TRACT 'A'	4.442	193,494
TRACT 'B'	0.731	31,847
TRACT 'C'	0.038	1,664
TRACT 'D'	0.178	7,749
TRACT 'E'	0.032	1,379
TRACT 'F'	0.051	2,211
TRACT 'G'	0.257	11,174
TRACT 'H'	0.056	2,459
TRACT 'I'	0.029	1,261
TRACT 'J'	0.049	2,121
TOTAL AREA	21.70	945,252



PLAN SHOWING SECTION INFORMATION (NOT TO SCALE)



LOCATION MAP (NOT TO SCALE)

TRACT 'L-9'
"THE RENAISSANCE"
(P.B. 90, PG. 162-174, P.B.C.R.)

RECORD PLAT PREPARED BY:

TECH Sun-Tech Engineering, Inc.
 Engineers - Planners - Surveyors
 Certificate of Authorization Number LB 7019

1600 West Oakland Park Boulevard Phone (954)777-3123
 Ft. Lauderdale, FL 33311 Fax (954)777-3114
 E-Mail: suntech@gate.net

R=415.00'
L=1018.50'
Tan=1159.55'
Δ=140°36'56"